

Nevada Highway Patrol

<https://nhp.nv.gov>

Like us on [Facebook](#) follow us on [Twitter](#)

December 29, 2015

Trooper Chelsea Stuenkel
Nevada Highway Patrol – Northern Command
Public Information Officer
cstuenkel@dps.state.nv.us or (702) 432-5277

Media Release

Driver Ejected and Killed in Single Vehicle Rollover

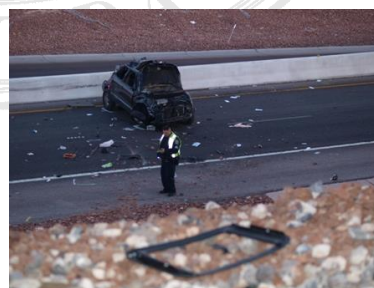
On Monday, December 28, 2015 at approximately 5:04 a.m. Troopers from the Nevada Highway Patrol were dispatched to an accident on northbound Interstate 215 westbound transition ramp from northbound Interstate 15.

The preliminary crash investigation revealed that a black Hyundai Santa Fe was traveling northbound on the IR215 westbound transition ramp from the northbound IR15 collector distributor (access road) in the left travel lane. The driver of the Hyundai failed to maintain the vehicle's travel lane and entered the left paved shoulder. The driver overcorrected to the right causing the vehicle to rotate clockwise. The Hyundai then left the west roadway edge and entered the rock landscaped area where it overturned. The unrestrained driver of the Hyundai was ejected. The vehicle continued northwest, down an embankment where it entered the IR215/ Las Vegas Blvd eastbound off ramp.

The 32 year old female driver of the Hyundai was later identified as Susan Lee from Las Vegas, NV. Susan Lee succumbed to injuries sustained in the crash and was declared deceased on scene.

This marks Nevada Highway Patrol-Southern Command's 62nd fatal crash resulting in 69 fatalities for this year.

You can contact Trooper C. Stuenkel at 702-469-3882 or Trooper L. Hixson at 702-533-6808 for further information.





XXXX

