



Nevada Highway Patrol

<https://nhp.nv.gov>

Like us on [Facebook](#) follow us on [Twitter](#)

November 27, 2015

Trooper Duncan Dauber
Public Information Officer
Nevada Highway Patrol-Northern Command West
(775) 600-5568 or (775) 689-4680
dDauber@dps.state.nv.us

Media Release

Three Vehicle Collision in Douglas County Kills One over the Holiday Weekend

On Friday, November 27th, at approximately 6:28 p.m., Troopers from the Nevada Highway Patrol were dispatched to a three vehicle crash that occurred on State Route 88 at the intersection at Mottsville Lane in Douglas County.

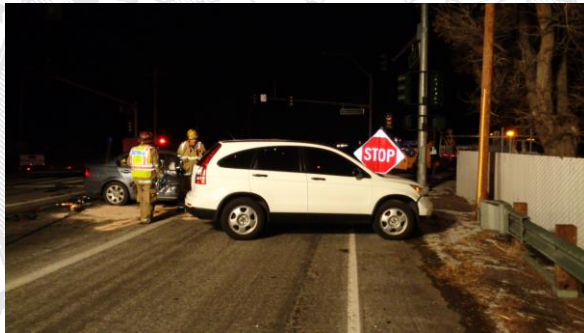
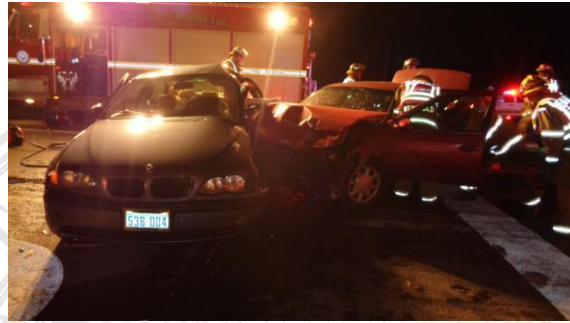
The preliminary crash investigation details indicate that a red Ford Taurus driven by 22 year old Holly Ducoing from Carson City NV, was traveling southbound on SR88 approaching the intersection with Mottsville Lane. A Blue BMW driven by Janis Hill, a 64 year old female out of Gardnerville NV, was eastbound on Waterloo Lane approaching SR88. The third vehicle was a white Honda SUV driven by Robin Owens, a 64 year old female from Minden NV, which was northbound on SR88 stopped at the intersection with Mottsville Lane.

Crash investigation reveals that the Taurus and BMW entered the intersection at the same time. With its front, the red Taurus struck the left side of the BMW in the intersection. Both vehicles were deflected in a southeast direction where they struck the Honda SUV.

Janis Hill from Gardnerville NV, succumbed to her injuries on scene. Ducoing was transported to a local hospital by ambulance for non-life threatening injuries. Owens was not injured during the course of the crash.

Impairment is unknown at this time. SR88 in this location is a two lane road with one lane in either direction.

Trooper Doug Hildebrand of the Nevada Highway Patrol's Multi-Disciplinary Investigation and Reconstruction Team (MIRT) is investigating this incident. Anyone who may have witnessed this incident or who may have information related to this incident is encouraged to reach out to him at (775) 689-4623, (775)434-3062 dhildebrand@dps.state.nv.us regarding case number NHP-151102611.



XXXX