

Nevada Highway Patrol

<https://nhp.nv.gov>

Like us on [Facebook](#) follow us on [Twitter](#)

October 2, 2016

Trooper Chelsea Stuenkel
Nevada Highway Patrol – Southern Command
Public Information Officer
cstuenkel@dps.state.nv.us or (702) 432-5277

Media Release

Driver Arrested in Fatal DUI Crash

On Sunday, October 2, 2016 at approximately 4:07 a.m., Troopers from the Nevada Highway Patrol were dispatched to a crash on Interstate 15 in Las Vegas.

Preliminary investigation revealed that a silver Lexus LS400 and a black Harley Davidson motorcycle were traveling southbound on IR15 north of Russell. The Lexus was in the left travel lane and the Harley was ahead of the Lexus, one lane to the right. According to witnesses, the Lexus was traveling in a reckless manner and the driver lost control of the vehicle. The Lexus rotated clockwise, traveled into the Harley's lane and the left side of the Lexus struck the rear of the Harley. The Lexus continued to rotate and travel across all lanes into the dirt shoulder where it struck a concrete barrier wall. The Harley overturned and the rider was ejected.

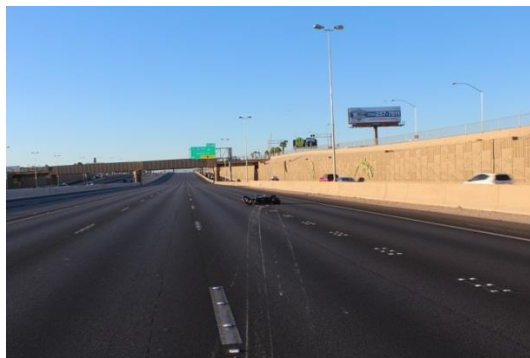
As a result of the crash, the 43 year old male rider of the Harley, who was later identified as Julio Salazar from Henderson, NV was transported to UMC trauma. Julio succumbed to injuries sustained in the crash and was pronounced deceased at UMC.

The 26 year old male front seat passenger of the Lexus was transported to UMC with serious injuries.

The 29 year old male driver of the Lexus, who was identified as Felipe Raagas from Las Vegas, NV was not transported. Felipe was arrested on suspicion of driving under the influence of alcohol and/or drugs and booked into Clark County Detention Center on the following charges:

- DUI above the legal limit resulting in death
- DUI above the legal limit resulting in substantial bodily harm
- Reckless driving resulting in death/substantial bodily harm (2 counts)

You can contact Trooper C. Stuenkel at 702-469-3882 or Trooper J. Buratzuk at 702-533-6808 for further information.



#####